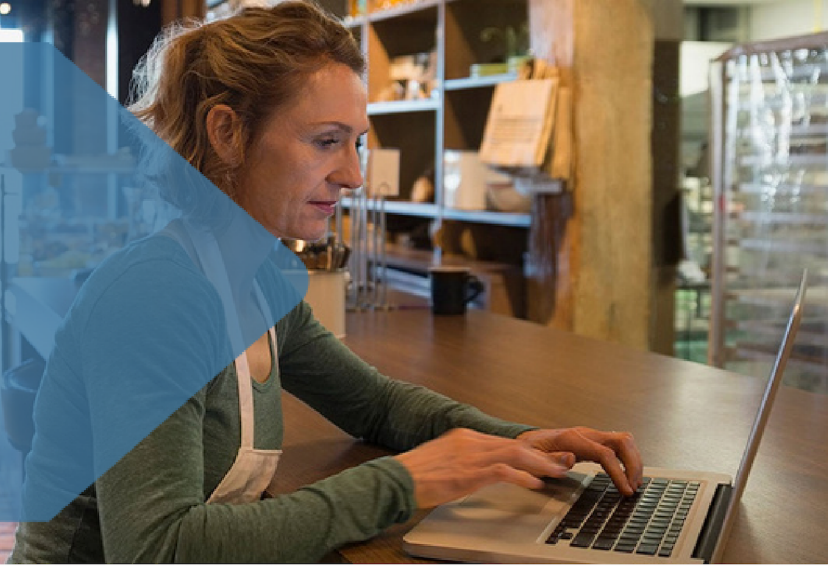


# Industrial Special Risks Insurance



## What is industrial special risks insurance?

This comprehensive coverage offers protection against a wide range of potential risks and losses such as damage and consequential loss to physical assets like buildings, stock, plant, and machinery and, and can be personalized to suit the unique demands of each business.

## Who should consider it?

The policy is particularly suited to medium to large-scale organizations with diverse business operations across multiple locations as well as for hard to place risk like hotels, pubs and ski chalets

## What can it cover?

Business insurance packs can offer general protection for a business, which may include cover against:

Type of cover	Potential benefits
Property Damage	Covers loss or damage to business property like buildings, contents, plant and machinery, stock, money, etc., even under fire and peril unless specifically excluded
Business interruption	Covers loss of income and turnover following insured damage to property and additional costs and expenses incurred during a claim.
Prevention of access	Partial coverage is provided for losses resulting from your inability to access your business premises due to an insured event occurring either at your premises or in the vicinity of your premises.
Removal of debris	Covers the expenses associated with cleaning up after damage to your business property
Theft	Cover for burglary, theft of money as well as employee dishonesty

Contact us today



Australian Pacific Business Insurance

Lyndon Holland  
0401 820 918  
lyndon@cbdis.com.au  
www.APBI.com

ACN: 661 780 749 | AR No. 238608  
AUSTRALIAN PACIFIC BUSINESS INSURANCE (APBI) PTY LTD



Important note

This general information does not take into account your specific objectives, financial situation or needs. It is also not financial advice, nor complete, so please discuss the full details with your Steadfast insurance broker whether this type of insurance is appropriate for you. Deductibles, exclusions and limits apply. This type of insurance is issued by various insurers and can differ.

Australian Pacific Business Insurance is an Authorised Representative of Australian Pacific Business Insurance ABN 83 661 780 749 AFSL 12346